

The Metex Joint Modification is to be installed on the vehicles listed below when the catalytic converter is replaced the first time. It is not necessary to replace the Metex Joint with subsequent replacement of the catalytic converter unless the joint is defective.

MODEL

APPLICATION 1979/1980 Brava-49 State Version with carburetor

PARTS

<u>LIST</u>	<u>PART NO.</u>	<u>DESCRIPTION</u>	<u>QUANTITY</u>
	4013947	Bushing (8mm)	1
	4112293	Hanger, rubber	1
	4112294	Side plate (8mm)	2
	5976766	Side plate (10mm)	2
	4341426	Locktab	1
	5934421	Bracket	2
	5934422	Bushing, short	2
	5934423	Spring	2
	5949962	Flange	1
	5949963	Tapered flange	1
	5949964	Flexible joint	1
	5949965	Spring	3
	5949968	Bracket (rear pipe)	1
	5949969	Bolt	1
	5949970	Bushing (10mm)	1
	10516870	Lockwasher (10mm)	2
	10519620	Washer (flexible joint)	3
	10520020	Spacer (support)	2
	10571770	Washer, rear support (8mm)	1
	11234721	Bolt, thru floor panel (10mm)	1
	12164721	Nut (10mm)	3
	12638601	Washer (10mm)	5
	12647001	Washer, large (8mm)	3
	13826821	Bolt, rear support (8mm)	1
	14089611	Nut	1
	15502221	Nut (flexible joint)	6
	16043837	Nolt, short	1
	16044021	Bolt, long	1
	16044121	Bolt, long (10mm)	1
	16100811	Nut	2
	16201731	Bolt (flexible joint)	3

WARRANTY

INFORMATION The installation of the Metex Joint Modification can be claimed on a warranty claim form when it is installed the first time with replacement of the catalytic converter. The overhaul of the Metex Joint can be claimed whenever it is necessary to replace a component of the Metex Joint.

Use the following labor operation numbers:

<u>LABOR</u>	<u>OPERATION</u>	<u>DESCRIPTION</u>	<u>BRAVA</u>
	900-10-02	Metex Joint Modification (with replacement of catalytic converter)	0.70
	900-10-04	Overhaul of Metex Joint	0.50

The installation of the Metex Joint Modification is to be done with the installation of a catalytic converter and therefore the Malfunction Code would be the correct code for the replacement of the catalytic converter.

The Malfunction Code for overhaul of the Metex Joint would be the Component Code-0613- and the proper Problem, Remedy, and Coverage Codes.

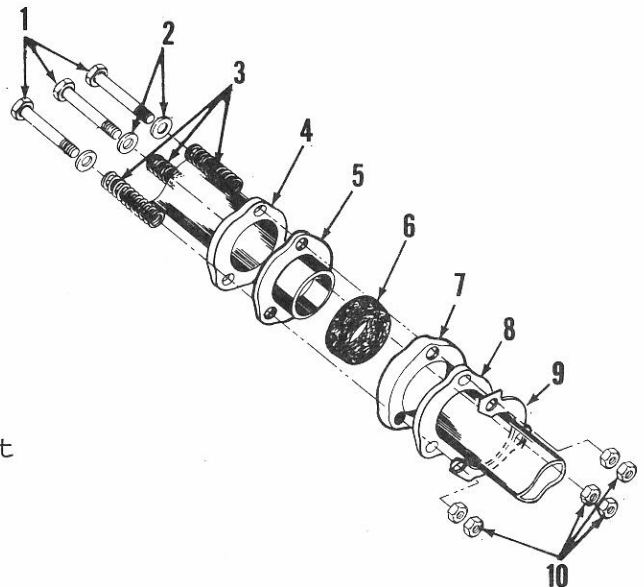
BRAVA

Place flexible joint(6) on flange(5).  
Place tapered flange(7) on flexible joint(6).

Position the flexible joint assembly between the exhaust pipe(4) and catalytic converter(8) flanges.

Place washers(2) and springs(3) on bolts(1). Install bolts through exhaust pipe flange, joint assembly, and catalytic converter flange. Place locktab(9) and two nuts(10) on bolts.

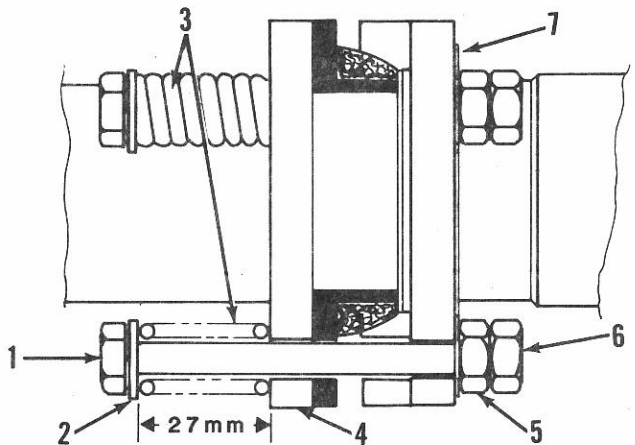
1. Bolt 2. Washer 3. Spring 4. Exhaust pipe 5. Flange 6. Flexible joint 7. Tapered flange 8. Catalytic converter 9. Locktab 10. Nut



Tighten bolts(1) to obtain a distance of 27mm (1 1/16 inches) between washers(2) and exhaust pipe flange(4).

After obtaining the correct distance on all three bolts, tighten nuts (6) against nuts(5). Bend tabs of locktab (7) up against the nuts.

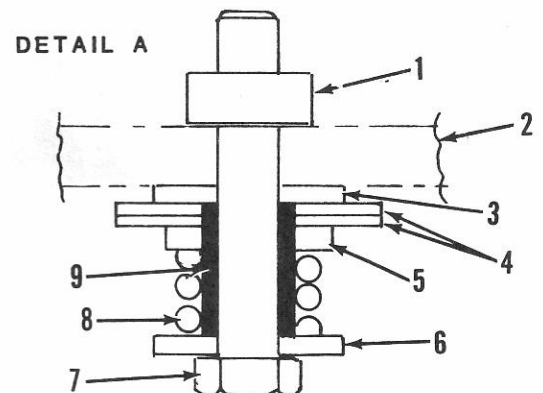
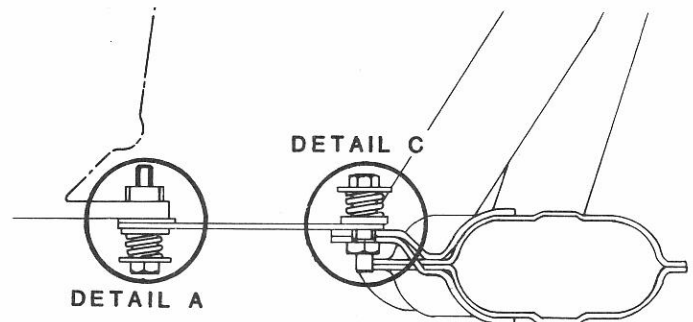
1. Bolt 2. Washer 3. Spring 4. Exhaust pipe flange 5. Nut 6. Nut 7. Locktab

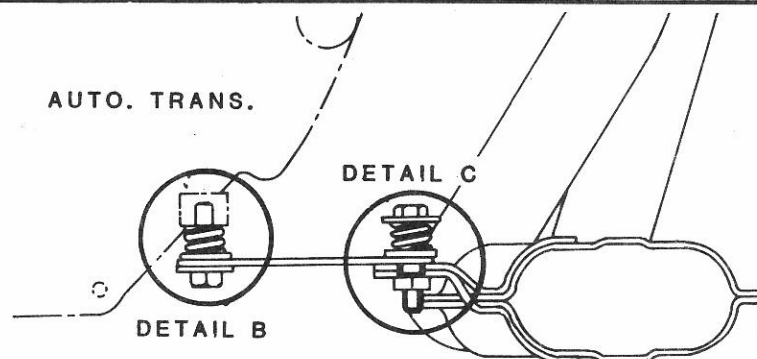


Remove the bracket connecting the front exhaust pipe to the transmission.

(See detail A-Manual Transmission)  
Place washer(6), short bushing(9), spring(8), and spacer(5) on bolt(7). Place the two brackets(4) on the spacer on the bolt. Place washer(3) on brackets. Make sure bushing(9) is through the spacer and brackets and is resting on the washer. Install the bolt and assembly on transmission housing(2) and secure the bolt with nut(1).

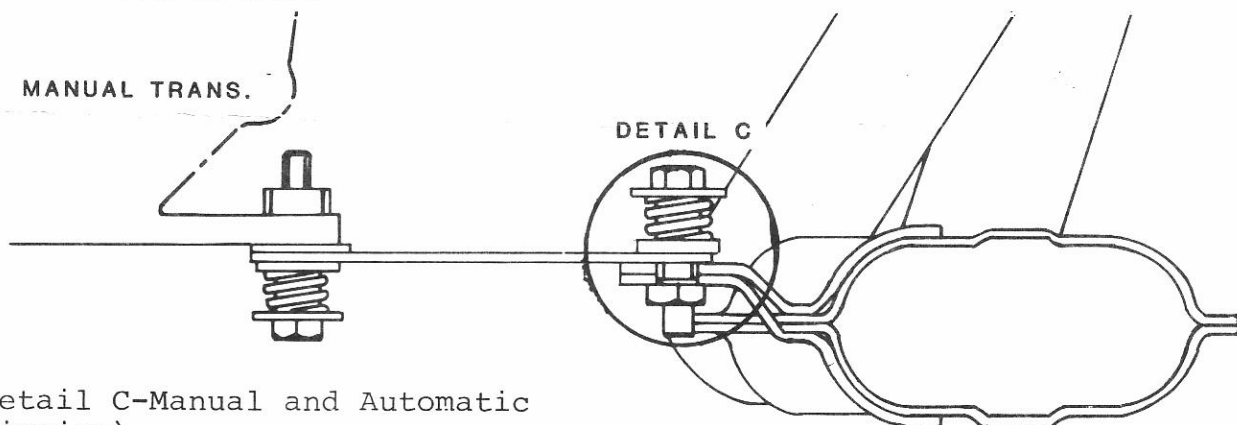
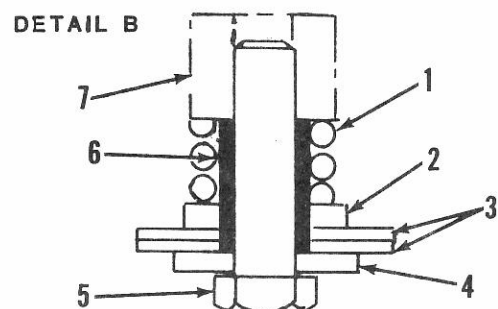
1. Nut 2. Transmission housing 3. Washer 4. Brackets 5. Spacer 6. Washer 7. Bolt 8. Spring 9. Bushing





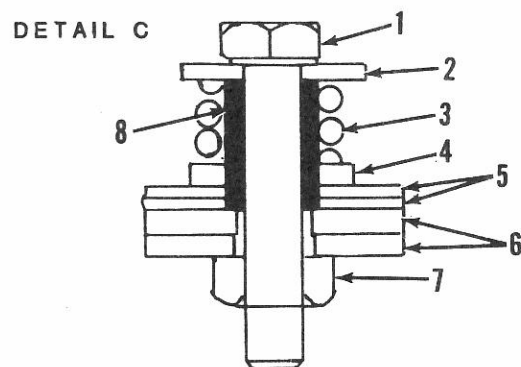
(See detail B-Automatic Transmission)  
Place washer(4), brackets(3), spacer (2), short bushing(6), and spring(1) on bolt(5). Make sure bushing(6) is through spacer(4) and brackets(3) and is resting on washer(4). Thread bolt(5) into transmission housing(7).

1. Spring 2. Spacer 3. Brackets
4. Washer 5. Bolt 6. Bushing
7. Transmission housing



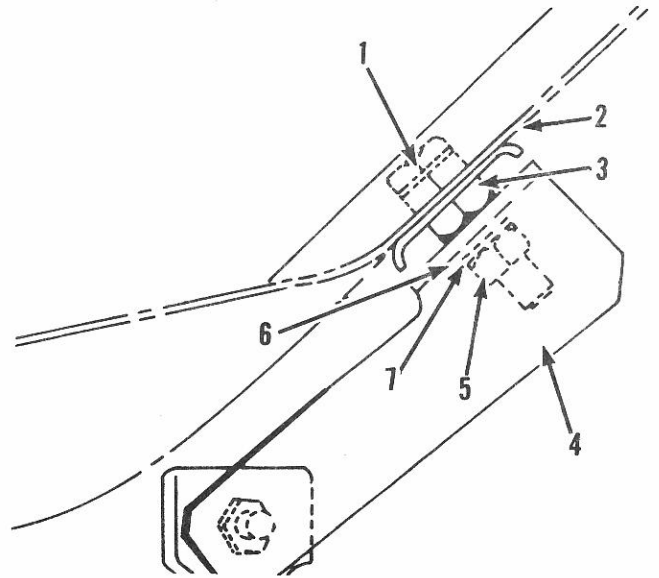
(See detail C-Manual and Automatic Transmission)  
Place washer(2), bushing(8), spring (3), and spacer(4) on bolt(1). Install bolt(1) through brackets(5) and exhaust pipe flange(6). Make sure bushing(8) is through spacer(4) and brackets(5) and is resting on exhaust pipe flange(6). Secure bolt with nut(7).

1. Bolt 2. Washer 3. Spring 4. Spacer
5. Brackets 6. Exhaust pipe flange
7. Nut 8. Bushing



Remove and discard the front hanger on the rear exhaust pipe.

Remove the rear seat. Locate the existing hole through the floor pan on the right side of the mounting bolt for the center right seat belt. Remove the rubber grommet from the hole and install a short 10mm bolt (1) through the floor pan (2). Secure bolt with nut(3). Tighten nut. Place bracket(4) on bolt(1) so that it slants down. Secure bracket with washer(6), lockwasher(7), and nut(5)

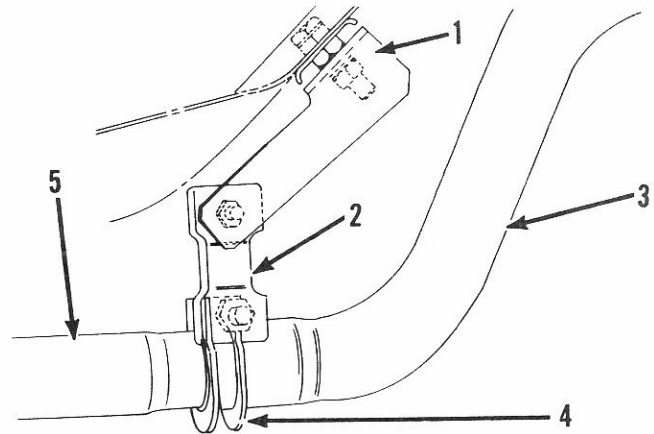


1. Bolt 2. Floor pan 3. Nut 4. Bracket  
5. Nut 6. Washer 7. Lockwasher

1. Bracket  
2. Flexible hanger assembly  
3. Exhaust pipe  
4. Collar  
5. Exhaust pipe

Turn exhaust pipe collar(3) to position holes horizontal on top of exhaust pipe.

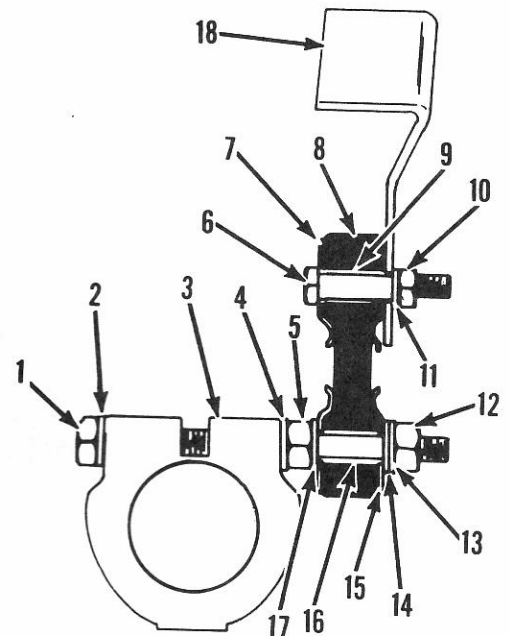
NOTE: Position collar so that hanger assembly is aligned with bracket. Install bolt(1) with washer(2) through collar(3). Secure bolt with washer(4) and nut(5).



NOTE: Some kits may have 4 side plates for hangers with 8mm holes. Two of these plates must be enlarged to 10mm holes.

Place washer(17), side plate(with 10mm hole) (15), hanger(8), 10mm bushing(16), side plate(with 10mm hole) (15), washer(14), and lockwasher(13) on bolt through collar(3). Secure hanger assembly on bolt with nut(12).

Place side plate(7) between hanger(8) and bracket(18). Install 8mm bushing (9) in hanger(8). Place side plate(7) on hanger. Secure hanger to bracket with bolt(6), washer(11), and nut(10). Tighten all nuts and bolts.



1. Bolt 2. Washer 3. Collar 4. Washer  
5. Nut 6. Bolt 7. Side plate(8mm)  
8. Hanger 9. Bushing(8mm) 10. Nut  
11. Washer 12. Nut 13. Lockwasher  
14. Washer 15. Side plate(10mm)  
16. Bushing(10) 17. Washer 18. Bracket